

Harmony Gateways X10 Support

Applies to Harmony Gateways with X10 Adapter such as the SmartLabs PLM

About X10 Support

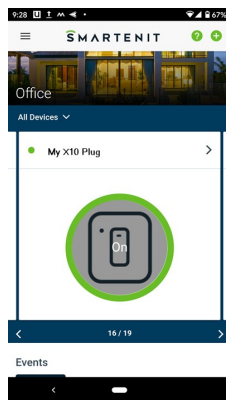
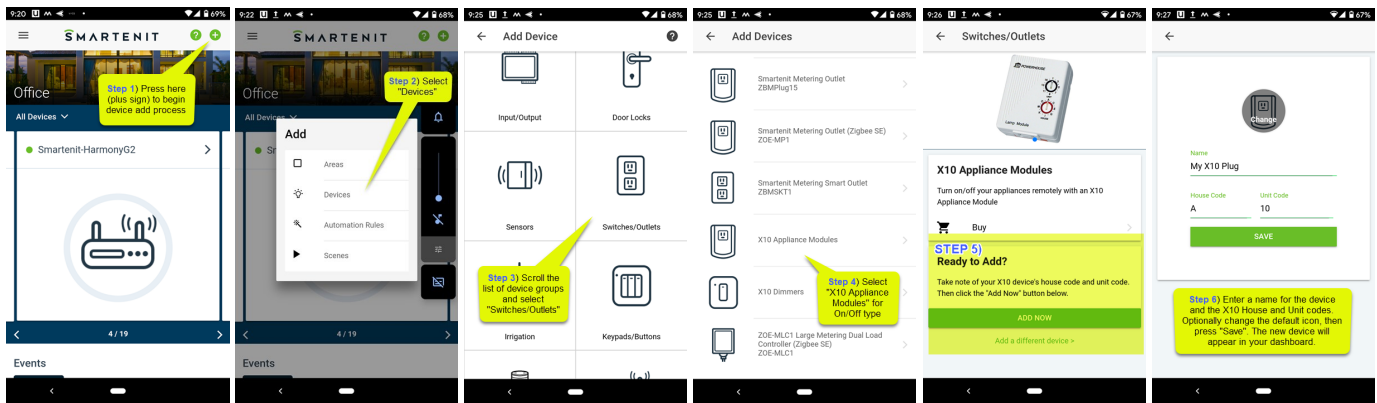
X10 signals travel through the powerline from the adapter in the gateway (PLM) to the device being controlled. X10 remotes and other X10 RF devices send RF signals to X10 receivers that convert RF into powerline signals. The X10 protocol is thus limited in that there is no 2-way communication among devices, and the need for house wiring to carry the signals without interference or interruption. In North America the powerline is split such that two portions of the house each carry a different electrical phase. For X10 to work reliably, the use of a “phase coupler” (usually installed in the main breaker panel) is an absolute necessity.

When “installing” X10 devices to the Harmony gateway, the automatic discovery of such devices is not possible due to the above mentioned limitations. Thus, it is necessary to “register” or tell the gateway the specific X10 device House and Unit numbers that address that device. The steps for this process are outlined below.

When devices are unreachable or act erratically, there is usually an issue with phase coupling or signal interference. Ensure the proper phase coupling is installed and also check for signal suppression which certain power strip introduce.

X-10 Device Addition Through The Smartenit App

This section assumes your gateway is properly setup with a good connection to your router. It should be visible through the mobile app installed in your smartphone. Follow the steps below to add and control a typical X-10 On/Off module.



Once the steps above are completed, your new X10 module will show up in the dashboard ready to be controlled.