

Harmony G2 Model #6007E Home Automation Gateway/Hub



About this Product (Small and Mighty!)

Your Harmony G2 is a stand-alone gateway/hub that provides monitoring and control of Home Automation (IoT) devices from any computer or mobile device (Android or iOS). The hub operates without an internet service (cloud) which is only needed when connecting from remote locations (outside the local area network). Beyond connectivity to home automation devices that use your local network directly (WiFi), the gateway can support zigbee, Insteon and X10. Specify the desired compatibility interfaces when ordering. Some interfaces may use one of the two USB ports provided.

Our free app makes for easy and convenient installation and operation and is available from the Google Play and Apple App Stores. Search for keyword "Smartenit". The app's intuitive and rich functionality provides, among other things, control of devices on demand, scenes set up, and the set up of automated schedules based on a variety of conditions.

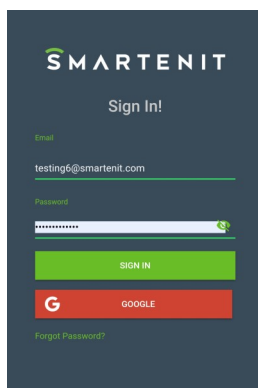
*Special note: All users continue with this guide. **X10 users** can find additional help by downloading the X10_Harmony.pdf found on the Harmony G2 product page in the Resources tab or linked [here](#).*

Installation

1. Connect any applicable interface (zigbee stick and/or Insteon/X10 PLM) device to one of the two USB ports. The zigbee interface is also built internally in some configurations.
2. **When using the Ethernet (wired) Connection:** Connect one end of the supplied Ethernet cable to your Ethernet switch/router and the other end into your Harmony G2.
3. Connect your Harmony G2 to DC power source with the supplied 5VDC 2A power supply.
4. **IMPORTANT:** When connecting for the first time, the G2 establishes a connection to our IoT server and does its initial registration. This process may take up to 5 minutes. Please wait some time before attempting to add the gateway to your app.
5. **There is no "Factory Reset" method provided. Once joined to your account, deleting the gateway will do the factory reset if you want to replace it or physically move it.**

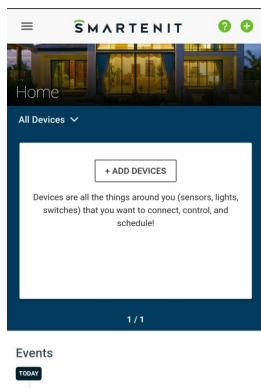


Account and Network Setup

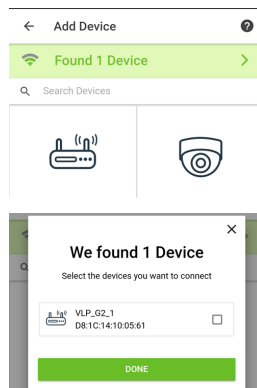


1) Sign In/Sign up: If you already have a Smartenit account, sign in with your **username** and **password**, otherwise sign up for a new account.

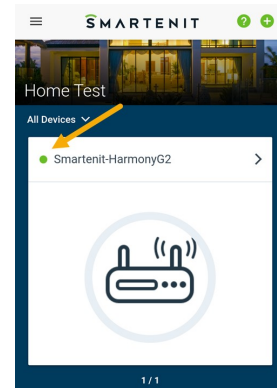
If signing up for a new account, enter the appropriate fields and continue to next step.



2) Add Gateway: Click either the "Add Devices" button from the dashboard or the green (+) sign on the top right of the screen to add your gateway. If using Ethernet, You should see "Found 1 device", which will be your gateway. go to step 4.



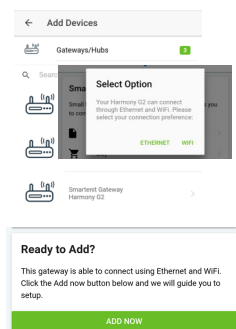
3) For WiFi Connection: click on "Gateways/Hubs", then select "Harmony G2" from the list of hubs. Next, click on "Add Now" and select WiFi from the options pop-up. Follow the steps in the "Connect via WiFi" section below to connect your G2 to the desired network.



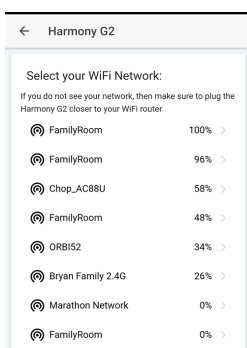
4) Click in the green box to select your gateway, then click the "Done" button. The gateway may take a minute to install and connect with the app. Do not proceed until the small dot next to the gateway name goes from blinking orange to solid green.

Harmony G2 Model #6007E Home Automation Gateway/Hub

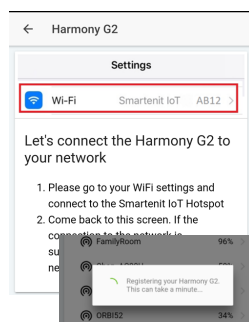
WiFi Connection Setup (Continued from Step 3)



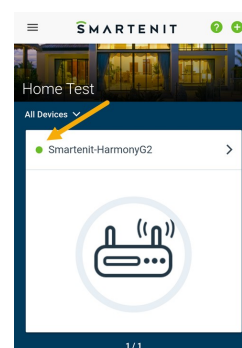
3a) Upon selecting the Harmony G2, in the "Ready to Add" dialog click on the large green "Add Now" button. Then select "WiFi" from the subsequent Options pop-up.



3b) Carefully follow the directions to connect your mobile device to the hub access point so it can connect to your WiFi. Then return to the Smartenit app to complete the rest of the setup. **Ensure the selected network is the same your mobile device is using.**



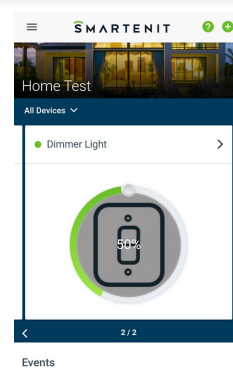
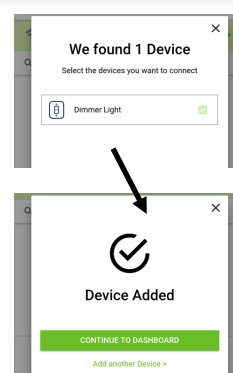
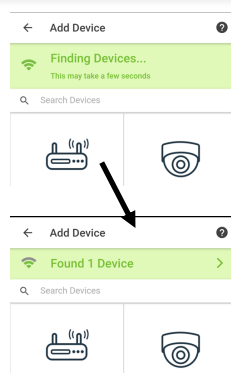
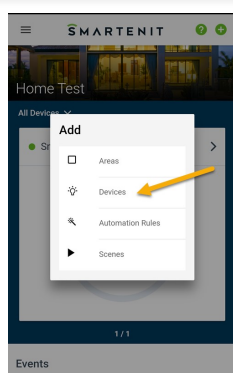
3c) Select the desired WiFi network and provide the required credentials so the gateway can use it. Once connected to this network, the gateway will initiate its registration with our IoT server.



3d) Once the gateway shows up on the dashboard and the indicator dot turns solid green, proceed to add devices and set your automation rules.

Adding a Device

1. Click on the (+) button on the top right menu and select "Devices".
2. In this example we will add an Insteon LampLink by the pushbutton method. Press on the link button on the LampLink until a short chirp is heard.
3. The LampLink is found. Click on "Found 1 Device", then click on "Done", then "Continue to Dashboard". The device card will show.



Adding an Automation Rule (used to automate smart device states based on another device status and/or time of day)

From the the side menu icon select "Automation Rules". Once in the Rules menu, click the (+) icon to add a new Automation Rule.

Give the Rule a name, then click the (+) icon in the "Conditions" window to add each condition and follow the prompts in the app. Save the Condition.

Click on the (+) icon in the "Actions" window to add an action to occur when condition(s) is/are met. Follow the prompts to add an action, then save the Action.

After Automation Rule is complete, you can review the Conditions and Actions for the Rule

